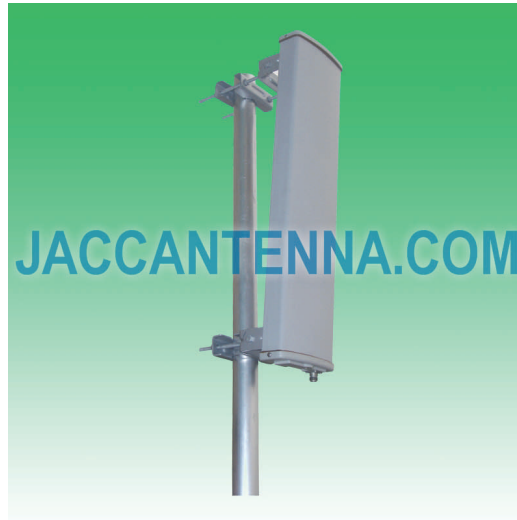


J0900S11-90 890-960 MHz 11 dBi 90° Vertical Polarization Sector Antenna



Antenna Model No.	J0900S11-90
Frequency Range	890 - 960 MHz
Bandwidth	70 MHz
Gain	11 dBi
Horizontal Beamwidth	90°
Vertical Beamwidth	29°
Front-to-Back Ratio	≥ 20 dB
VSWR	≤ 1.5
Nominal Impedance	50 Ohms
Maximum Power	100 Watts
Polarization	Vertical
Connector	N Female
Dimensions	25.6" x 11.2" x 5.3" / 650 x 285 x 135 mm
Weight	9.9 lbs / 4.5 kg
Radome	PVC
Wind Load	120 mph / 60 m/s
Mast Mount Diameter	1.6" - 3.0" / 40 - 75 mm
Operating Temperature	-22°F to 140°F / -30°C to 60°C

