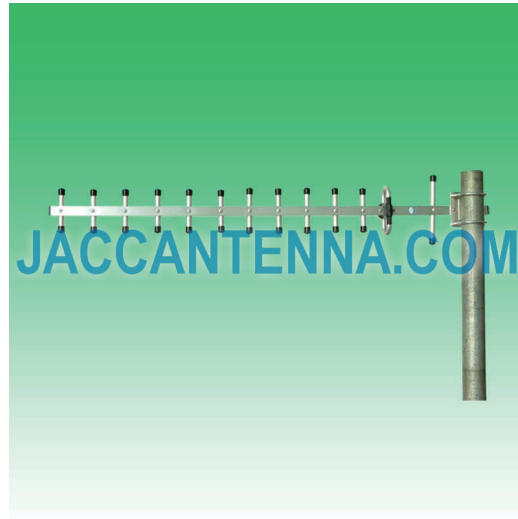


J1200Y13 1100-1300 MHz 13 dBi V-POL or H-POL Yagi Antenna



Antenna Model No.	J1200Y13
Frequency Range	1100 - 1300 MHz
Bandwidth	200 MHz
Gain	13 dBi
Horizontal Beamwidth	30°
Vertical Beamwidth	30°
Front-to-Back Ratio	≥ 14 dB
VSWR	≤ 1.5
Nominal Impedance	50 Ohms
Maximum Power	100 Watts
Polarization	Vertical or Horizontal
Connector	N Female
Dimensions	47.2" / 1200 mm
Weight	2.2 lbs / 1 kg
Wind Load	120 mph / 60 m/s
Element Material	Aluminum
Mast Mount Diameter	1.6" - 2.0" / 40 - 50 mm
Operating Temperature	-22°F to 140°F / -30°C to 60°C

