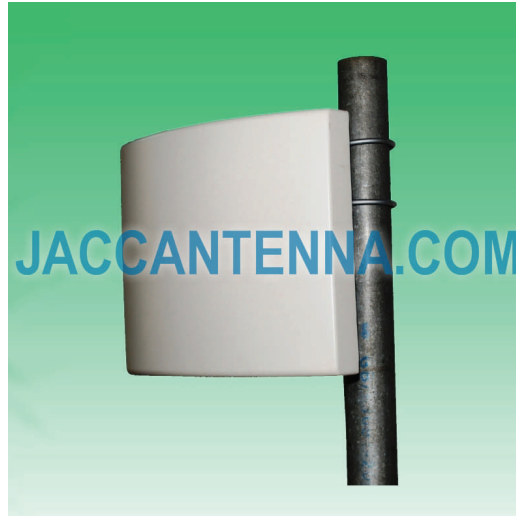


J1921P10 1920-2170 MHz 10 dBi Vertical Polarization Patch Antenna



Antenna Model No.	J1921P10
Frequency Range	1920 - 2170 MHz
Bandwidth	250 MHz
Gain	10 dBi
Horizontal Beamwidth	60°
Vertical Beamwidth	50°
Front-to-Back Ratio	≥ 15 dB
VSWR	≤ 1.5
Nominal Impedance	50 Ohms
Maximum Power	50 Watts
Polarization	Vertical
Connector	N Female
Dimensions	9.8" x 8.7" x 2.4" / 250 x 220 x 60 mm
Weight	2.4 lbs / 1.1 kg
Wind Load	120 mph / 60 m/s
Radome	ABS
Mast Mount Diameter	1.6" - 2.0" / 40 - 50 mm
Operating Temperature	-22°F to 140°F / -30°C to 60°C
Mounting Options	Mast Mount

