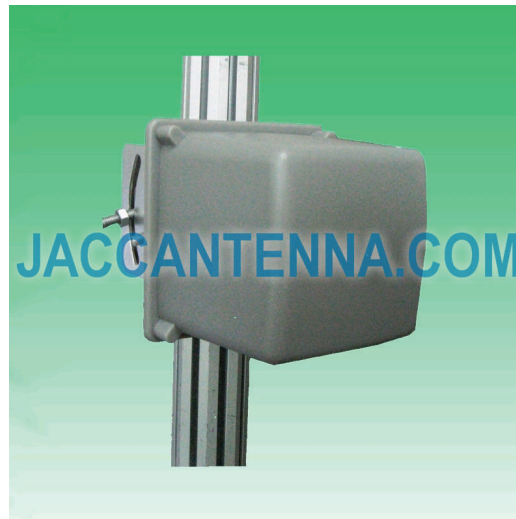


J2400P12 2400-2500 MHz 12 dBi Vertical Polarization Patch Antenna



Antenna Model No.	J2400P12
Frequency Range	2400 - 2500 MHz
Bandwidth	100 MHz
Gain	12 dBi
Horizontal Beamwidth	40°
Vertical Beamwidth	50°
Front-to-Back Ratio	≥ 16 dB
VSWR	≤ 2.0
Nominal Impedance	50 Ohms
Maximum Power	100 Watts
Polarization	Vertical
Connector	N Female
Dimensions	4.1" x 4.1" x 4.3" / 105 x 105 x 110 mm
Weight	1.1 lbs / 0.5 kg
Wind Load	120 mph / 60 m/s
Radome	ABS
Mast Mount Diameter	1.6" - 2.0" / 40 - 50 mm
Operating Temperature	-22°F to 140°F / -30°C to 60°C
Mounting Options	Mast Mount

