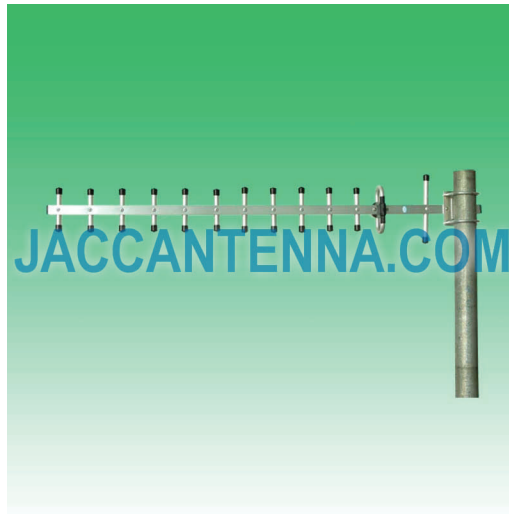


J2400Y13 2400-2500 MHz 13 dBi V-POL or H-POL Yagi Antenna



Antenna Model No.	J2400Y13
Frequency Range	2400 - 2500 MHz
Bandwidth	100 MHz
Gain	13 dBi
Horizontal Beamwidth	29°
Vertical Beamwidth	25°
Front-to-Back Ratio	≥ 14 dB
VSWR	≤ 1.5
Nominal Impedance	50 Ohms
Maximum Power	100 Watts
Polarization	Vertical or Horizontal
Connector	N Female
Antenna Length	27.6" / 70 cm
Weight	1.8 lbs / 0.8 kg
Wind Load	120 mph / 60 m/s
Element Material	Aluminum
Mast Mount Diameter	1.6" - 2.0" / 40 - 50 mm
Operating Temperature	-22°F to 140°F / -30°C to 60°C

