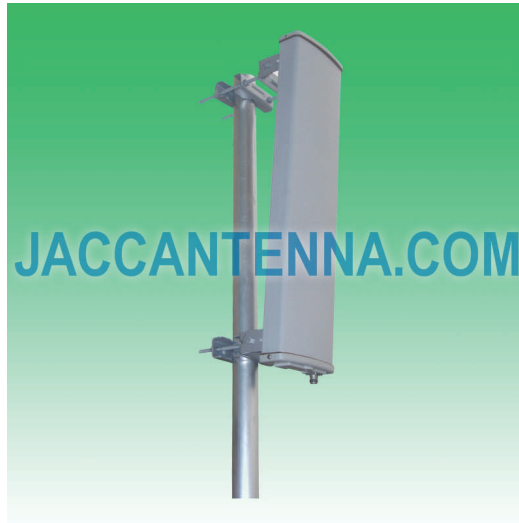


J2600S15-60 2500-2700 MHz 15 dBi 60° Vertical Polarization Sector Antenna



Antenna Model No.	J2600S15-60
Frequency Range	2500 - 2700 MHz
Bandwidth	200 MHz
Gain	15 dBi
Horizontal Beamwidth	60°
Vertical Beamwidth	15°
Front-to-Back Ratio	≥ 25 dB
VSWR	≤ 1.5
Nominal Impedance	50 Ohms
Maximum Power	100 Watts
Polarization	Vertical
Connector	N Female
Dimensions	20.5" x 6.9" x 2.4" / 520 x 175 x 60 mm
Weight	7.0" lbs / 3.2 kg
Wind Load	120 mph / 60 m/s
Radome	ABS
Mast Mount Diameter	2.0" - 3.0" / 50 - 75 mm
Operating Temperature	-22°F to 140°F / -30°C to 60°C

