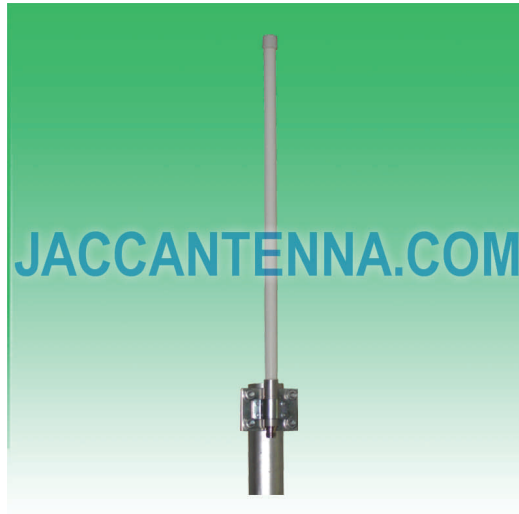


J3500O11 3400-3600 MHz 11 dBi Vertical Polarization Omni Antenna



Antenna Model No.	J3500O11
Frequency Range	3400 - 3600 MHz
Bandwidth	200 MHz
Gain	11 dBi
Horizontal Beamwidth	360°
Vertical Beamwidth	9.5°
VSWR	≤ 1.5
Nominal Impedance	50 Ohms
Maximum Power	100 Watts
Polarization	Vertical
Connector	N Female
Length (Height)	31.5 / 800 mm
Wind Load	120 mph / 60 m/s
Radome	Fiberglass
Mast Mount Diameter	1.6" - 2.0" / 40 - 50 mm
Operating Temperature	-22°F to 140°F / -30°C to 60°C

