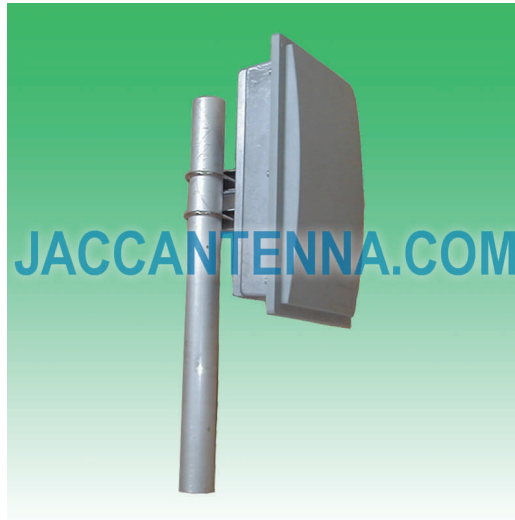


## J5158E18-C 5150-5850 MHz 18 dBi Vertical Polarization Enclosure Antenna



<b>Antenna Model No.</b>	<b>J5158E18-C</b>
<b>Frequency Range</b>	5150 - 5850 MHz
<b>Bandwidth</b>	700 MHz
<b>Gain</b>	18 dBi
<b>Horizontal Beamwidth</b>	60°
<b>Vertical Beamwidth</b>	8°
<b>Front-to-Back Ratio</b>	≥ 25 dB
<b>VSWR</b>	≤ 1.5
<b>Nominal Impedance</b>	50 Ohms
<b>Maximum Power</b>	100 Watts
<b>Polarization</b>	Vertical
<b>Connector</b>	N Female or Customized
<b>Dimensions</b>	12.6" x 7.9" x 4.7" / 320 x 200 x 120 mm
<b>Weight</b>	6.6 lbs / 3.0 kg
<b>Wind Load</b>	120 mph / 60 m/s
<b>Radome</b>	ABS
<b>Mast Mount Diameter</b>	1.6" - 2.0" / 40 - 50 mm
<b>Operating Temperature</b>	-22°F to 140°F / -30°C to 60°C

