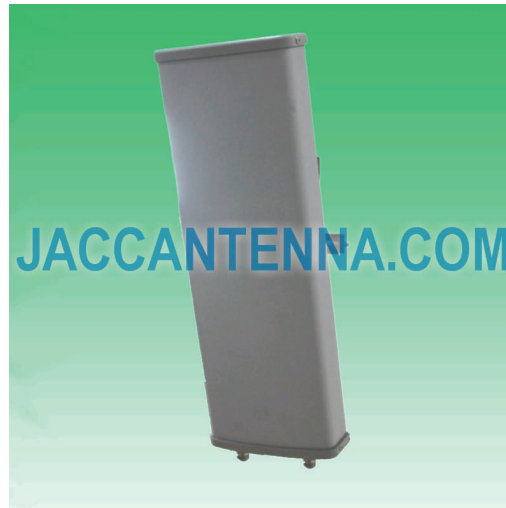


J5158S18-60DP MIMO 5150-5850 MHz 2x 18 dBi 60° Dual Polarization Sector Antenna



Antenna Model No.	J5158S18-60DP
Frequency Range	5150 - 5850 MHz
Bandwidth	700 MHz
Gain	2x 18 dBi
Horizontal Beamwidth	60°
Vertical Beamwidth	20°
Front-to-Back Ratio	≥ 25 dB
VSWR	≤ 2.0
Nominal Impedance	50 Ohms
Maximum Power	100 Watts
Polarization	Dual Polarization (Vertical & Horizontal)
Connector	2x N Female
Dimensions	18.5" x 6.9" x 2.4" / 470 x 175 x 60 mm
Weight	4.0 lbs / 1.8 kg
Wind Load	120 mph / 60 m/s
Radome	PVC
Mast Mount Diameter	1.6" - 2.0" / 40 - 50 mm
Operating Temperature	-22°F to 140°F / -30°C to 60°C

