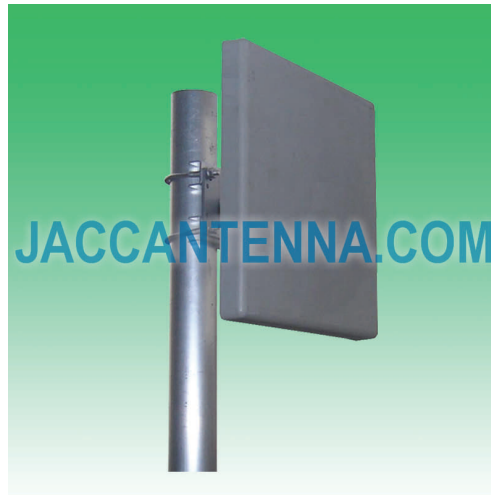


J5800P18-DP MIMO 5725-5850 MHz 2x 18 dBi Dual Polarization Patch Antenna



Antenna Model No.	J5800P18-DP
Frequency Range	5725 - 5850 MHz
Bandwidth	125 MHz
Gain	18 dBi
Horizontal Beamwidth	17°
Vertical Beamwidth	17°
Front-to-Back Ratio	≥ 28 dB
VSWR	≤ 1.5
Nominal Impedance	50 Ohms
Maximum Power	100 Watts
Polarization	Dual Polarization (Vertical & Horizontal)
Connector	2x SMA Female
Dimensions	10.2" x 10.2" x 1.4" / 260 x 260 x 35 mm
Weight	3.3 lbs / 1.5 kg
Wind Load	120 mph / 60 m/s
Radome	ABS
Mast Mount Diameter	1.6" - 2.0" / 40 - 50 mm
Operating Temperature	-22°F to 140°F / -30°C to 60°C
Mounting Options	Mast Mount

